

# Likewise

2022/23

# Creative Therapies Placements



## Join our Community

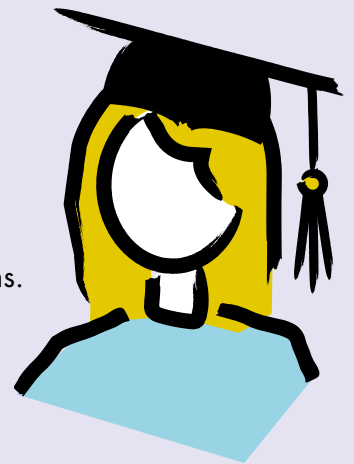
Likewise is a dynamic charity working at the heart of the Camden community to create social inclusion and wellbeing support. Whilst we're not a therapeutic service ourselves, we recognise the importance of therapeutic spaces for adults, particularly creative therapies. Your work with us will allow people to experience a different way of engaging with their wellbeing and to explore what value a therapeutic relationship may hold for them.

We're passionate about people, we're passionate about mental health and we're passionate about sharing our learning with the next generation of professionals – and so it's our hope that at the end of a placement with us, you'll have had an experiential learning opportunity that's offered you the chance to examine your practice, develop your skills and gain insight into what it's like offering therapy in a community setting.

# The Placement Offer

You'll be volunteering with us either 1-2 days per week for a minimum of 6 months, or 1-2 days per week for 12-16 weeks during the summer (June/July–September). You'll:

- ✳ **Lead on therapeutic sessions:** You'll offer individual and/or group therapeutic sessions to our clients and community members, as well as those of some of our partner organisations such as Mind in Camden.
- ✳ **Lead on non-therapeutic work:** You'll also engage in the other day-to-day work of Likewise. This might take the form of 1-to-1 support with people in their homes/community, involvement in group settings/activities, or working with us to set up and lead a piece of research.
- ✳ **Join a team:** You'll work closely with the Likewise team, as well as other professionals in your clients' networks. We'll be here to support you in meeting challenges in the work and upholding our duty of care towards clients.
- ✳ **Record keeping and administration:** You'll undertake planning and administrative tasks that support your work: organising your time, recording clients sessions.



## SUPERVISION AND TRAINING

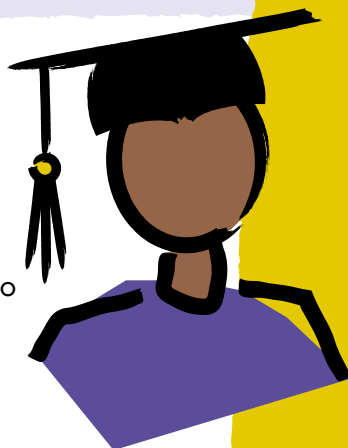
Our placement is all about providing the best learning opportunity possible so that you can hit the ground running in your career. You'll:

- ✳ Become part of a vibrant team of staff ready to share their wealth of experience and other placement students diving into our work for the first time alongside you
- ✳ Have your own Likewise supervisor (alongside your clinical supervision) who'll support, guide and challenge you
- ✳ Have the option of accessing free formal training certifications designed to boost your working skills and knowledge and ensure that by the time you finish with us, your CV will really stand you apart from the crowd

## About You

We are looking for people who:

- ✓ Love people as much as we do
- ✓ Have great interpersonal and communication skills
- ✓ Are interested in working with our values
- ✓ Demonstrate openness to learning
- ✓ Are ready and willing to be pushed well outside their comfort zone



## How to Apply

To apply or find out more visit:

<https://likewise.org.uk/learning-andopportunities/placement-opportunities/>

Fancy a chat about our placements?  
Email us at: [learning@likewise.org.uk](mailto:learning@likewise.org.uk)

**We're looking forward to meeting the newest member of the Likewise Team!**